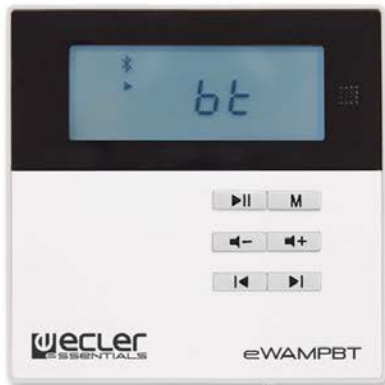




eWAMPBT

COMPACT AMPLIFIERS

Stereo wall amplifier with media player and Bluetooth



USER MANUAL

INDEX

Important note	2
Key features	3
Front Panel	3
Startup	4
FM.....	4
SD.....	4
USB.....	4
Bluetooth connection.....	5
AUX.....	5
Mechanical diagrams	5
Remote control	6
Technical specifications	7
Rear panel	8
Installation	9
Packing list	9

IMPORTANT NOTE

Congratulations! You are the owner of a carefully designed and manufactured piece of equipment. We thank you for trusting in us and choosing our eWAMPBT in-wall amplifier. In order to get the optimum operation and efficiency from this unit, it is VERY IMPORTANT - before you plug anything in - to read this document very carefully and bear in mind all considerations specified within. We strongly recommend that maintenance be carried out by our Authorized Technical services. Keep this document for future references.



Warning: an inappropriate usage of the device could cause injury, death or damage the apparatus.

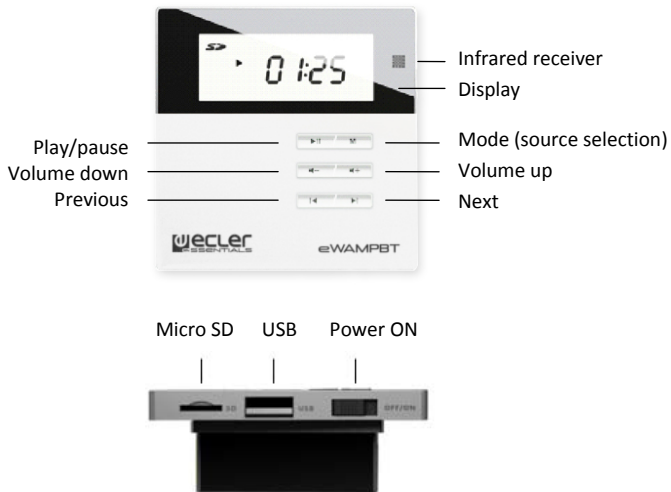
PRECAUTIONS

- Never use this unit in proximity to water or fire
- Do not expose the unit to water splashing
- Avoid placing the unit next to heat sources such as spotlights or heaters
- The use of high voltage may cause electric shock or fire, take safety precautions and use appropriate equipment when installing the device
- Install the device following manufacturer's indications. An incorrect installation may lead the device to fall down, causing a personal injury or property damage
- The device must be installed in solid surface
- Do not manipulate the device with wet hands
- Do not pull the wires of an electric installation, it may cause fire or an electric shock
- Do not remove the device when it is connected to the electric installation. Before it, unplug the loudspeaker
- Do not install the device on vent covers

KEY FEATURES

- Built-in 2x10 WRMS high efficient amplifier @ 8 ohm
- Standard 86 box, luxurious appearance design with LED screen
- Multiple music connection modes, including FM, micro SD, USB, Bluetooth, AUX1 and AUX2.
- Supports MP3, WMA, WAV, FLAC and other audio formats.
- Adjustable sensitivity of auxiliary input
- Can store up to 20 FM radio channels. Support automatic and manual search
- Wide voltage input, suitable for 100~240VAC, 50/60Hz
- Remote control included
- Surface-mount installation box included

FRONT PANEL



WARNING: connect the AC terminals to electrical mains supply before powering ON the device.

STARTUP

FM

Press **M** key to choose FM mode.

Automatic Search: long press ►|| to start the automatic channel search and the system will automatically save the available radio stations.

Manual tuning mode: long press ►| or |◄ to enter the manual tuning mode; and then short press ►| or |◄ to adjust the current channel. If no key operation within 5 seconds, it will save the current channel and leave manual tuning mode.

Mute: short press ►|| for mute FM playback.

Channel selection: short press |◄ or ►| to navigate through saved channels.

Volume control: short press ◀+ or -◀ to increase or reduce the current volume.

SD

Press **M** key to choose SD mode. If there is no SD card, the display will show “NO” and flicker. If files are not supported or there are no files, the display will show “----”.

Play control: ►|| to play/pause. Short press |◄ or ►| to navigate through songs. Long press to fast forward or fast reverse.

Volume control: short press ◀+ or -◀ to increase or reduce the current volume.

USB

Press **M** key to choose USB mode. If there is no USB device, the display will show “NO” and flicker. If files are not supported or there are no files, the display will show “----”.

Play control: ►|| to play/pause. Short press |◄ or ►| to navigate through songs. Long press to fast forward or fast reverse.

Volume control: short press ◀+ or -◀ to increase or reduce the current volume.

BLUETOOTH CONNECTION

Press **M** key to choose Bluetooth mode. If there is no connection, the display will show “BT” and flicker. When the device is connected successfully, “BT” will be always on. eWAMPBT is displayed in other devices as ECLERXXXXXXXXXX, where the last 9 digit numbers is the device’s serial number. The password can be found in the rear side label.

Play control: ▶|| to play/pause. Short press ◀ or ▶ to navigate through songs. Long press to fast forward or fast reverse.

Volume control: short press ◀+ or ◀- to increase or reduce the current volume.

AUX

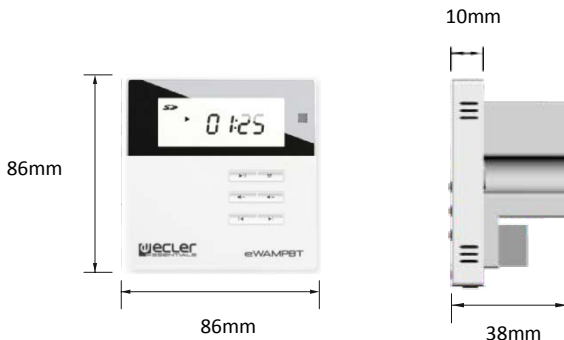
Press **M** key to choose AUX1 (or AUX2) mode.

Play control: ▶|| to play/mute. When it is muted, the display will flicker.

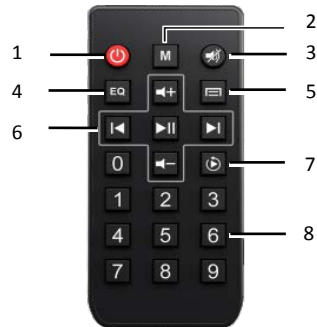
Sensitivity adjustment: long press ◀ or ▶ to select S1 or S2 sensitivity adjustment. S1: input and output 500mV; S2: input 1000mV, output 500mV)

Volume control: short press ◀+ or ◀- to increase or reduce the current volume.

MECHANICAL DIAGRAMS



REMOTE CONTROL



1. Standby
2. Mode selection (source selection)
3. Mute
4. Equalization mode selection
5. Menu (not available)
6. Transport & volume control
7. Play mode selection
8. Number keys. In SD mode allows to select a track number. In FM mode allows write the FM frequency.

TECHNICAL SPECIFICATIONS

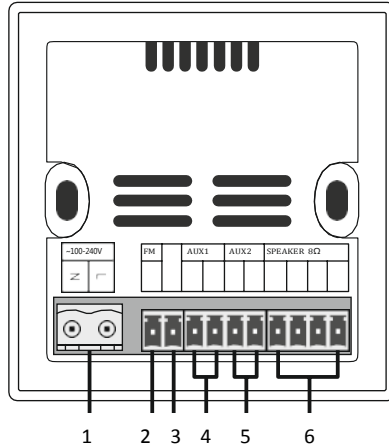
eWAMPBT

Power input	100-240V
Output power	2x10 WRMS
Rated impedance	8 ohm
THD	≤0.03% (1KHz, 1W, 8Ω)
S/N ratio	>81dB
Frequency response	20Hz~20kHz
Sensitivity Aux input (adjustable)	AUX1: 1V/500mV; AUX2: 1V/500mV
Audio formats	MP3, WMA, WAV, FLAC, etc.
Bluetooth	BT2.1+EDR
Storage	Support TF card up to 32GB
Dimensions	86×86×38mm

Remote Control

Angle of effective emitter region	60°
Effective remote-controlled distance	10m
Battery of remote control	CR2032

REAR PANEL



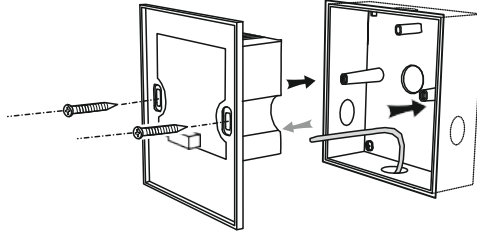
1. Power input: 100-240V (2xRV 1.0mm² multistranded copper core flexible wire)
2. FM antenna
3. Signal ground
4. Audio input 1 (2×0.3mm² double-shielded audio cable)
5. Audio input 2 (2×0.3mm² double-shielded audio cable)
6. Power amplifier output (2×0.3mm² double-shielded audio cable)

IMPORTANT NOTE: all wire connections shall not be naked

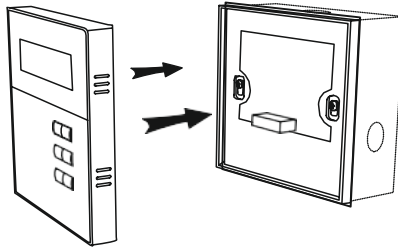
Function	Symbol	Name
Power input	N	Null line
	L	Live wire
FM	ANT	FM antenna
GND		Signal ground
AUX1	R	Audio input right
	L	Audio input left
AUX2	R	Audio input right
	L	Audio input left
Power amplifier output 8 ohm	OUTL+	Left speaker + terminal
	OUTL-	Left speaker - terminal
	OUTR-	Right speaker - terminal
	OUTR+	Right speaker + terminal

INSTALLATION

1. Install the surface-mount box in the desired location.
2. Connect the wiring to the rear panel of eWAMPBT, and fix it with two screws to the installation box.



3. Insert the eWAMPBT's front panel.



PACKING LIST

- Front panel
- Rear panel
- Remote control
- Mounting screws
- Surface-mount box
- User manual
- Warranty card

Serial number:

Bluetooth password:

All product characteristics are subject to variation due to production tolerances. NEEC AUDIO BARCELONA S.L. reserves the right to make changes or improvements in the design or manufacturing that may affect these product specifications.

Motors, 166-168 08038 Barcelona - Spain - (+34) 932238403 information@ecler.es www.ecler.com