

## IC8

### CEILING LOUDSPEAKERS

*In-ceiling / In-wall Loudspeaker*



### PRODUCT OVERVIEW

With its discreet design, the IC8 2-way loudspeaker is the perfect option for 70/100 V and low impedance sound solutions. It mounts an 8" woofer and a 1" tweeter.

IC series provide excellent sound quality thanks to their infinite baffle philosophy and a top-performance high frequency transducer.

### KEY FEATURES

- Two-way ABS speaker, 60 WRMS
- 8" woofer / 1" tweeter
- Built-in audio transformer for 70/100 V use
- Polypropylene woofer that resists heat and humidity
- Front grill may be removed for painting
- Aluminium front grill, rust-proof
- Clip-type input terminals and low impedance / high impedance power tap selector
- Cutting and painting templates included
- Support system with 3 rotating tabs

### APPLICATIONS

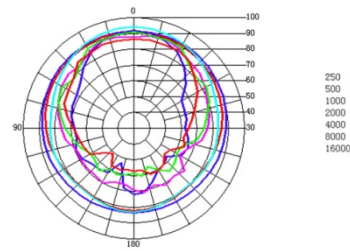
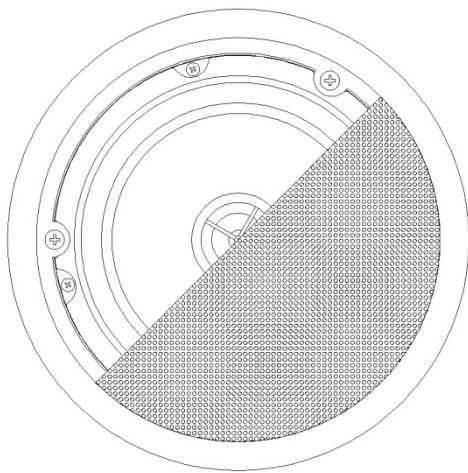
- Corporate and residential buildings
- Commercial premises
- Leisure centres
- Sound reinforcement in clubs, bars, etc.
- Health and sports centres
- Meeting and conference rooms
- 5.1 and 7.1 surround systems
- Auditoriums, museums

### CERTIFICATIONS

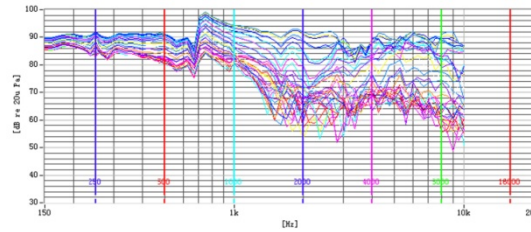
- EN60065:2014
- EN55103-1:2009
- EN55103-2:2009
- 2006/95/EC
- 2004/108/CE

MECHANICAL DIAGRAMS

POLAR DIAGRAMS



HORIZONTAL



TECHNICAL DATA

<b>Nominal low impedance</b>	8Ω
<b>RMS power</b>	60W
<b>Nominal high impedance</b>	100V Line
<b>Power selector</b>	5, 7.5, 15, 30W
<b>Frequency response (-6dB)</b>	55Hz - 20kHz
<b>Sensitivity 1W/1m</b>	91dB
<b>External diameter</b>	245mm
<b>Internal diameter</b>	220mm
<b>Recommended cut out diameter</b>	222mm
<b>Required depth</b>	91mm
<b>Weight</b>	2,3Kg

All product characteristics are subject to variation due to production tolerances. NEEC AUDIO BARCELONA S.L. reserves the right to make changes or improvements in the design or manufacturing that may affect these product specifications.  
 Motors, 166-168 08038 Barcelona - Spain - (+34) 932238403 [information@ecler.es](mailto:information@ecler.es) [www.ecler.com](http://www.ecler.com)