

IC6

CEILING LOUDSPEAKERS

In-ceiling / In-wall Loudspeaker



PRODUCT OVERVIEW

With its discreet design, the IC6 2-way loudspeaker is the perfect option for 70/100 V and low impedance sound solutions. It mounts a 6" woofer and a 1" tweeter.

IC series provide excellent sound quality thanks to their infinite baffle philosophy and a top-performance high frequency transducer.

KEY FEATURES

- Two-way ABS speaker, 40 WRMS
- 6,5" woofer / 1" tweeter
- Built-in audio transformer for 70/100 V use
- Polypropylene woofer that resists heat and humidity
- Front grill may be removed for painting
- Aluminium front grill, rust-proof
- Clip-type input terminals and low impedance / high impedance power tap selector
- Cutting and painting templates included
- Support system with 3 rotating tabs
- Available in black or white finish

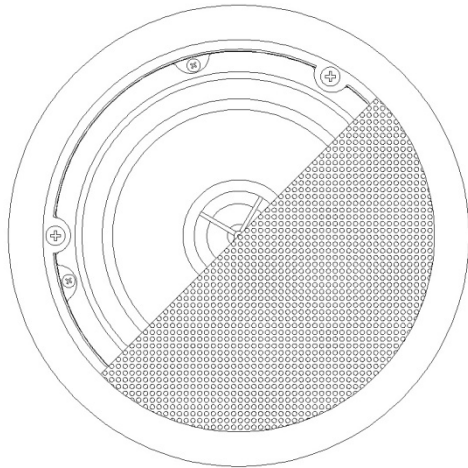
APPLICATIONS

- Corporate and residential buildings
- Commercial premises
- Leisure centres
- Sound reinforcement in clubs, bars, etc.
- Health and sports centres
- Meeting and conference rooms
- 5.1 and 7.1 surround systems
- Auditoriums, museums

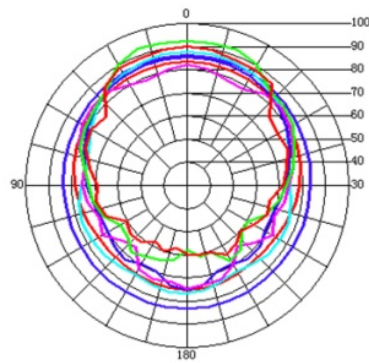
CERTIFICATIONS

- EN60065:2014
- EN55103-1:2009
- EN55103-2:2009
- 2006/95/EC
- 2004/108/CE

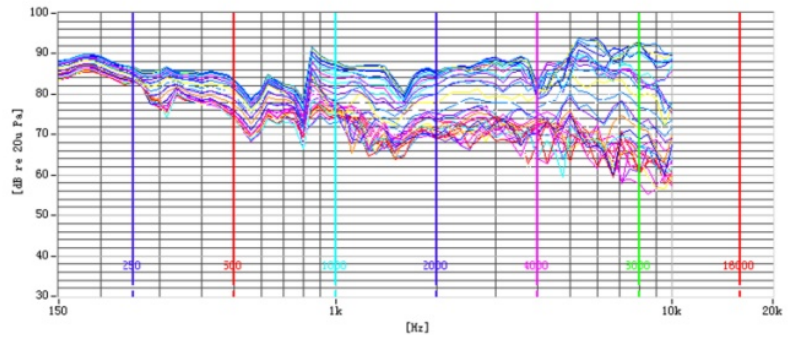
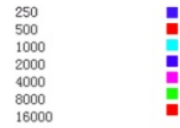
MECHANICAL DIAGRAMS



POLAR DIAGRAMS



HORIZONTAL



TECHNICAL DATA

Nominal low impedance	8Ω
RMS power	40W
Nominal high impedance	100V Line
Power selector	2.5, 5, 7.5, 15W
Frequency response (-6dB)	80Hz – 20kHz
Sensitivity 1W/1m	88dB
External diameter	204mm
Internal diameter	178mm
Recommended cut out diameter	180mm
Required depth	73mm
Weight	1,5Kg